

THE **chronicle**

A WLWP Digital Publication



from the executive director	1
adult services	2
in the vault	3
program highlights	4
hanging in the hoxie	6
air • artist-in-residence	7
public services	8
park news	9
youth services	10
books, media & more	12
all programs	14



from the executive director



Operating a non-profit public library, maintaining a historic building, and managing a public arboretum involves a surprising amount of behind-the-scenes complexity from battling budgets to blight, and a steadfast task of stewardship—of knowledge and nature by a dedicated team of staff and volunteers. While the library and park are institutions in their own right, they exist under a single umbrella, the Memorial & Library Association, and play critical roles in enriching the community. Balancing the two demands diverse skills, resources, and a strong sense of mission. We are able to do this through a structured approach of following policies, procedures, and best practices.

Many don't know that we have a tome we refer to as our Collection Development Policy that guides how we acquire all library materials, a policy for using our spaces for private events, and a policy for borrowing nontraditional library materials (such as a metal detector, stroller, hotspots, or putt-partee). We also have Rules of Conduct, a policy that sets expectations for all who use the library and park so that everyone is able to take advantage of and enjoy both. This includes, but is not limited to, no overly loud phone calls, no purposely plugging toilets or sinks, no playing in the fountain (by people or pets), no vulgar comments to visitors or staff, and no riding bikes, scooters, or skateboards.

Yes, these are all things that we deal with on a weekly, if not daily basis. We dislike saying no to people, and never intend to squash fun, but there are good reasons behind our rules including why micro mobility vehicles or active transportation (bicycles, scooters, skateboards and similar electric versions) are not allowed. Some of these reasons are outlined below:

- Bicycles can move significantly faster than walkers. Our park walkways were not designed to accommodate these speed differences which can lead to potential collisions and injuries for both cyclists and pedestrians.
- The park landscape includes trees, benches, and other features, that can obstruct visibility, again, increasing the risk of accidents.
- As a strolling park, Wilcox Park was designed with features and layouts for walking, leisurely movement, and enjoying nature. Active transportation can disrupt the tranquil atmosphere and compromise the intended use of the park.
- Walkers may not anticipate or react quickly enough to approaching bicycles, leading to sudden movements or swerving to avoid collisions.

Such types of transportation are relatively inexpensive and convenient to get downtown, to the park, or the library. Just don't ride in the park. You may walk your bike through the park or, if heading into the library or nearby store, feel free to use one of our two bike racks: off of the High Street entrance, or next to the side door of the library. Just please remember to lock them up.

Shared public spaces flourish when its users are respectful, careful, and responsible, which keep spaces like our library and park safe, welcoming, and vibrant. This in turn helps our beloved community thrive.

I encourage you to continue reading to discover all the things you can do here at Westerly Library & Wilcox Park this August. I am certain they will bring you joy, inspiration, connection, and scholarship.

Warmly,

Brigitte S. Hopkins
Executive Director

adult services

New Resource

We are thrilled to share that you can now access [Consumer Reports Online](#) with your Westerly Library card! Consumer Reports (CR) is the world's largest nonprofit product-testing organization and has been helping subscribers find better, safer products for 80+ years. Consumer Reports accepts no outside advertising and no free test samples and employs shoppers and experts to buy and test the products reviewed.

ConsumerReports.org provides tons of information about cars including ratings and reviews, buying advice, and so much more. It also provides research, ratings, and recommendations on a wide range of health topics, such as exercise equipment, fitness products, medical equipment, hospitals, treatments, and natural medicines.

It doesn't just offer reviews and recommendations for purchases; you can find advice about Home and Garden (Cleaning Your Mattress), Electronics (Streaming Services Guide), Appliances (Tips for Doing Laundry), and Digital Security (Identity Theft Advice). To try it out go to: westerlylibrary.org/databases and select Consumer Reports. Enter your Westerly Library card number and click ConsumerReports.org to start reading!



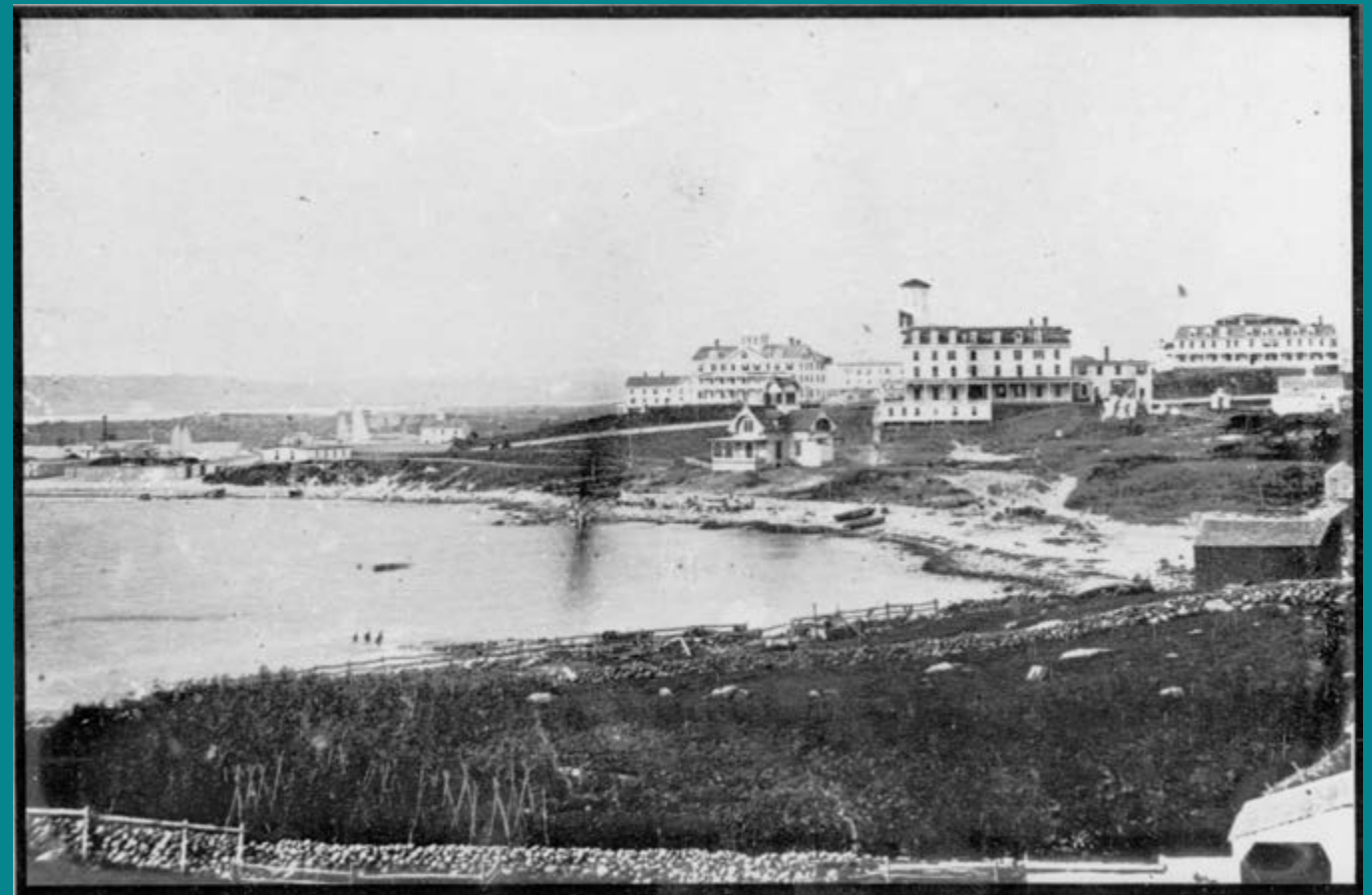
puzzle corner

Did you know that we have a Puzzle Corner full of jigsaw puzzles and a few games? It was created from generous donations from patrons like YOU, and it has become a popular place to grab something to do on a rainy day. Puzzles do not need to be checked out with a card; you can just swing by, choose a puzzle or two, and enjoy! Donations help keep our collection fresh and fun for everyone, so if you have new or gently used puzzles laying around, we're happy to add them to our collection!

in the vault

This month we have been helping patrons with: researching the Ward family of Charlestown, the Amos Richardson family of Stonington, the Browns of Pawcatuck, the history of Dunn's Corners, an overview of the past maritime industry here in Westerly, and information on Gavitt's Cafe for a Colorado couple, as some ancestors of theirs lived in Westerly and owned the establishment.

When not helping patrons with their own research, I have been scanning and uploading two lovely new photo collections we have received. One is a collection of Watch Hill photos from the late 1800s, and one is a group of photos of India Point in Avondale spanning the 1890s through to the 1950s. Here is one of our new photos--you can view all of them on the [Westerly Library Flickr](#) site!



This photo is taken from light house point in Watch Hill, and was probably taken in the 1870s. You can see, left to right, the original Watch Hill House, the Larkin House, and the Atlantic House.

program spotlights

Puzzle Competition & Swap • Saturday,
August 9, 10 am-12 pm • Terrace Room • All
ages



Brick Fest: LEGO Celebration • Saturday,
August 16 • 9 am-4 pm • Auditorium & Terrace
Room • All ages



Author Talk and Q&A with Juliette Fay | The
Harvey Girls: Pioneering Waitresses of the
Southwest • Thursday, August 21 • 6:00-7:30
pm • Auditorium



Leaving a Legacy • Tuesday, August 26 • 2-3
pm • Auditorium



For our full calendar of events, click here or visit: westerlylibrary.org/calendar-of-events



If you are interested in reserving space for a temporary storefront, informational & resource hub, student project or more, please contact awagner@westerlylibrary.org. For more information about The Pop-Up at Coy, please visit the link above.

Next Up in The Pop-Up at Coy:



[Congressional Community Office Hours • Thursday, August 28th | 12-2 PM](#)

Stop by The Pop-Up at Coy between 12-2 pm to get answers to questions you may have on a federal agency. Rep. Seth Magaziner's Constituent Services team will be on site to help residents of the 2nd Congressional District of Rhode Island navigate through federal agencies including Social Security (SSA), Veterans Benefits (VA), Medicare & Medicaid, Health & Human Services (HHS), Immigration (USCIS), IRS, Passports, and more.

hanging in the hoxie

August Group Show Exhibition | “Real and Represented”



This month's exhibit will feature works by local artists Marjorie Ball, Lisa Fatone, Amy Ryan and William Whitehill! Head to the Hoxie Gallery from 5-7 pm Wednesday, August 6th for an opportunity to meet the artists and enjoy light bites. Works can be viewed in the Hoxie Gallery through the month of August during library hours.

For more information on the artists, upcoming exhibits, and the Hoxie Gallery please visit:
westerlylibrary.org/hoxie-gallery

**Opening
Reception**
 Wednesday,
 August 6th, 5-7 PM

air
 artist-in-residence



save the date

Noam Makover | Multi-Instrumentalist/Composer
 September/October 2025

To learn more about Noam and his upcoming residency, [click here](#).



The Cottage in Wilcox Park is available for private events! Reserve it now for an upcoming work or family gathering, a bridal suite or birthday party, temporary office space or workshop, and more. Click the image above to inquire.

public services

service highlight

Have you ever arrived at the library in a hurry to print something? You need to log into your email, and no matter how hard you try you cannot remember the password. And you've just remembered you don't have any cash! The clock is ticking and what can you do?

No worries, Princh will come to your rescue. Princh is an app that allows printing from your phones, laptops and the library's public-use computers. For those using phones, make sure to download the document to your device first. Then scan the QR code found on flyers in the library's computer lab, upload your document and send it to the printer.

Attention library patrons!

We are looking to know what books YOU enjoy reading! Look for the signage near our Circulation desk that says WHAT ARE YOU READING? There you can find slips of paper to fill out with the book's information and why YOU enjoyed it. Entries will then be displayed in January 2026. Thank you for contributing and sharing what you love!



Patrons can pay with Google Pay, Apple Pay, debit card, credit card or cash. For those printing from a laptop the process is nearly the same. Open a browser on your laptop and go to print.princh.com. Enter the printer ID located on the signage in the computer lab and upload your document. So easy!

Princh promises you can print in under 60 seconds. And, it is just so much easier than trying to remember a password from home when you are trying to print that shipping label or tax form! Ask at the Technology Information desk for more information.

library of things

Is your garden plentiful this time of year, but you don't have the right tools to harvest? Visit our [Library of Things \(LoT\)](#) near the Circulation desk to borrow everything to help you! We have a garden kneeler, tool kit with one trowel and pruning shears, and both a hand weeder and standing weed puller. All you need is your library card!



park news

A Champion tree was taken down in the park.

At some point in the evening of Saturday, July 5th, one of Wilcox Park's state champion trees let go of one of its major limbs. It must have made a tremendous noise as it crashed down onto a Kousa dogwood growing below, destroying it with the impact.

The cause for the failure was evident in the exposed rot of the new cavity. Had this been the full extent of the damage, the champion would still be standing. However, this limb failure exposed a much more serious issue whereas just above it a two-inch wide crack was observed in the crotch of the tree's main leader limbs and was liable to completely separate at any moment. With a physical defect of this severity mitigation through cabling or heavy pruning wouldn't have been a safe option. Removal was warranted.



In the botanical world common names vary, quite often by the region you are in. *Paulownia tomentosa* (botanical genus and specie) goes by a variety of common names including Princess and Empress Tree. *Paulownia* has striking attributes that set it apart from other tree species. In spring before it leafs out, large pineapple-sized purple flowers adorn the trees branches. These flowers resemble that of lilac but on a much bigger scale. After these flowers fall off the seeds develop. They are encased in a woody capsule that the old timers cleverly (and environmentally) utilized as a packing material in wooden crates. No Styrofoam needed! The fast-growing specie creates a very soft wood that is used for carving.

Sadly this tree was one of Wilcox Park's eight RI Champion trees. A young offspring is growing next to the remaining old trunk.

Alan Peck, Park Superintendent



Saturday, August 23rd

10 am-12 pm

Terrace Room

Join us for our 2nd annual School Supply Swap where you can exchange new and gently used school supplies in preparation for the upcoming academic year!

We welcome students of all ages! Although this is a great incentive to clean out your closet, school supply donations are not required to participate in this event. Bring your own bags to carry away your treasures!

DROP OFF DAYS:

Calling for Supplies! We are accepting donations NOW through Friday, August 22nd. Drop off new or gently used items at the Kids/Tweens Information desk during regular library hours. All donated items will be available without charge at our School SupplySwap on Saturday, August 23rd.

WHAT TO BRING/DONATE:

School supplies including, but not limited to:

- Backpacks • Calculators • Folders • Lunchboxes • Notebooks • Pencils/Pens/Markers • Rulers



For more information or to apply, please call 401-596-2877 x342 or visit:
www.westerlylibrary.org/homebound-delivery



**Susan Rosen, Volunteer
Community Resource Advocate**
Tuesdays/1-3 PM/Roberts Room

Susan is available weekly to offer guidance to connect your or loved ones with local resources available based on specific needs.

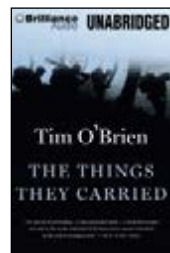
email: advocate@westerlylibrary.org

Visit our website events calendar for their most up-to-date schedules.

**Toby, Volunteer Mental Health
Advocate**
Thursdays/10 AM-12 PM/Roberts Room

If you have concerns about your wellbeing and want to talk to someone, feel free to stop in to see Toby, available weekly.

books, media & more



[The Things They Carried](#) by Tim O'Brien

Recommended by Rob
Related stories, linked by recurring characters and an interwoven plot, recreate an American foot soldier's experience in the Vietnam War.



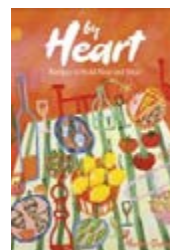
[The Lost Queen](#) by Signe Pike

Recommended by Penelope
The Mists of Avalon meets the world of Philippa Gregory in the thrilling first novel of a debut trilogy that reveals the untold story of Languoreth--a forgotten queen of sixth-century Scotland--twin sister of the man who inspired the legend of Merlin.



[The Lord of the Rings: The Fellowship of the Ring](#) by J.R.R. Tolkien

Recommended by Keara
A meek Hobbit from the Shire and eight companions set out on a journey to destroy the powerful One Ring and save Middle-earth from the Dark Lord Sauron.



[By Heart: Recipes to Hold Near and Dear](#) by Hailee Catalano

Recommended by Amanda
Over 100 restaurant-quality recipes designed to be made in your home kitchen.



[Practical Magic](#)

Recommended by Julianna
The wry, comic romantic tale follows the Owens sisters as they struggle to use their hereditary gift for practical magic to overcome the obstacles in discovering true love.



[Long Bright River](#) by Liz Moore

Recommended by Stacey
Looks at the anatomy of a Philadelphia family rocked by the opioid crisis and the relationship between two sisters--one, suffering from addiction, who has suddenly gone missing amid a series of mysterious murders; the other a police officer who patrols the neighborhood from which she disappeared.

for customized
recommendations
click here

staff curated recommendations

youth picks



[Bog Myrtle](#) by Sid Sharp

Recommended by Casey
A children's graphic novel that's a witty modern folktale and touches on themes of capitalism, environmentalism, labor rights, and being a nice person.



[The Pigeon Needs a Bath!](#) by Mo Willems

Recommended by Orson
The Pigeon is dirty and he needs a bath, but he won't go willingly



[The Tea Dragon Society](#) by Kay O'Neill

Recommended by Julianna
After discovering a lost Tea Dragon in the marketplace, apprentice blacksmith Greta learns about the dying art form of Tea Dragon caretaking from the kind tea shop owners.

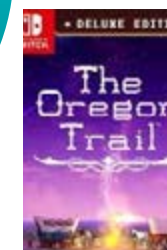
video game recs

Visit our YouTube channel
where you'll find a
new Library Let's Plays
courtesy of our Tween
Librarian, Ben, every
Thursday!



[Dragon Quest Monsters: The Dark Prince](#)

Recommended by Ben
Journey into a fantastical world on a quest for revenge. Join Psaro, a cursed demon prince, as he scouts, combines, and builds a party of monsters to take into battle on his path to becoming the Master of Monsterkind.



[Oregon Trail](#)

Recommended by Melanie
Come back to The Oregon Trail! Will you survive the journey? Or will you fall to starvation, broken wagon wheels, bandits, failed river crossings, or dysentery? Your decisions make all the difference.

Program Highlights

- [Colonial Theatre Presents Frank Ferrante’s “Groucho”, August 1-2, 7-9, 8:00-9:45 pm/August 3, 6:00-7:45 pm](#)
- [Black Bear Presentation with Paul Colburn, Wednesday, August 6, 6-7:30 pm](#)
- [Puzzle Competition & Swap!, Saturday, August 9, 10 am-12 pm](#)
- [Author Talk with Caleb Mason | “Thickafog: An Archer Island Mystery”, Tuesday, August 12, 6:30-7:30 pm](#)
- [Poppi’s Planet Storytime Performance, Wednesday, August 13, 10-11 am](#)
- [Lecture with Professor Andrew Pessin | “Anti-Zionism on Campus: The University, Free Speech, and BDS”, Wednesday, August 13, 5:00-6:30 pm](#)
- [Creating a Will, Thursday, August 14, 5-6 pm](#)
- [Colonial Theatre Presents Shakespeare Summer Shorts, August 14-16, 7:15- 9:00 pm](#)
- [Author Talk and Signing with Marguerite Holloway | “Take to the Trees”, Friday, August 15, 4-5 pm](#)
- [Brick Fest: LEGO Celebration Saturday, August 16, 9 am-4 pm](#)
- [Music in the Park | United Theatre Youth Jazz Bands, Sunday, August 17, 1:00-2:30 pm](#)
- [Author Talk with Jim Pierce: “The Beginning”, Monday, August 18, 6-7 pm](#)
- [Adult Retro Game Night, Wednesday, August 20, 5:30-7:30 pm](#)
- [Author Talk and Q&A with Juliette Fay | “The Harvey Girls: Pioneering Waitresses of the Southwest” Thursday, August 21, 6-7 pm](#)
- [School Supply Swap, Saturday, August 23, 10 am-12 pm](#)
- [SWE-NESS Workshop | Zip Line, Saturday, August 23, 1-2 pm](#)
- [Leaving a Legacy, Tuesday, August 26, 2-3 pm](#)
- [Field Day in the Park, Monday, August 25, 1-3 pm](#)

- [Music in the Park | Geoff Kaufman, Saturday, August 31, 4-6 pm](#)

Ongoing Programs & Events

MAKERSPACE

[Tech Social, 2nd Wednesdays, 1-2 pm](#)

ADULTS

[Alzheimer’s Association Caregiver Support Group, 2nd Wednesday of the month, 5:30-6:30 pm](#)

[Chess Club, Thursdays, 5:30-7:30 pm](#)

[Cookbook Club, 2nd Wednesday of the month, 6:00-7:30, Terrace Room](#)

[Crafternoon To-Go, 1st Monday of the month, 9 am-8 pm](#)

[Knit and Crochet, Tuesdays, 5:30-7:30](#)

[Mostly Fiction Book Club, 2nd Tuesday of the month, 6:00-7:30 pm](#)

[The Poetry Gathering, 2nd Monday of the month, 5-7 pm](#)

[Sewers in Stitches, Mondays, 2-4 pm](#)

[Silent Book Club, Last Wednesday of the month, 5:30-7:00 pm](#)

[Way Back Wednesday Movie Night, Last Wednesday, August 27, 6:00-7:50 pm](#)

[Westerly Area Needle Workers, 1st & 3rd Saturday, 9 am - 12 pm](#)

[Westerly Writers Group, 1st, 3rd, & 5th Saturdays, 10:00 am-12:30 pm](#)

TEENS

[Teen Café, daily, 2-3 pm](#)

[Game On, Mondays, 3-4 pm](#)

[Lunch & Learn, Thursdays, 2-3 pm](#)

[Mysticus Mundus, Mondays, 3:00-4:30 pm](#)

[Nails at the Space, 2nd & 4th Wednesdays, 3-4 pm](#)

[Teen Pride Alliance, 1st & 3rd Wednesdays, 3-4 pm](#)

[Teen D&D, Tuesdays, 4:00-5:30 pm](#)

TWEENS

[Animation Nation, Wednesdays, 2-3 pm](#)

D&D

[Homeschool Group: Tuesdays, 1:30-3:00 pm](#)

[Group 1: Tuesdays, 3:30-5:00 pm](#)

[Group 2: Tuesdays, 5:00-6:30 pm](#)

[Group 3: Wednesdays, 4:30-6:00 pm](#)

[Mysticus Mundus, Mondays, 3:00-4:30 pm](#)

KIDS

[Family Games Galore, Tuesdays, 2-3 pm](#)

[Kids Craft Time: Level Up Summer - Thursdays, 4-5 pm](#)

[Seaside Storytime, Westerly Town Beach, Fridays, 9:30-10:30 am](#)

[Storytime, Wednesdays, 10:00-10:30 am](#)

[Three & Younger Playgroup - Thursdays, 10:00-10:45 am](#)

RESOURCES/INFORMATIONAL TABLES

[Community Resources Advocate, Tuesdays 1-4 pm](#)

[Mental Health Advocate, Thursdays, 10 am - 12 pm](#)

[Project Outreach Veterans Assistance, 2nd Friday of the month, 10-11 am](#)

[The Pop-Up at Coy: Congressional Community Office Hours, Thursday, August 28, 12-2 pm](#)

PARK

[Essentrics Stretch, Wednesdays, 9:30-10:30 am](#)

[Walking Tour of Wilcox Park | Native Flowers and Trees, 2nd Saturday of the month, 10:00-11:30 am](#)

[Walking Tour of Wilcox Park | Specimen Trees, 4th Saturday of the month, 10:00-11:30 am](#)

[URI Master Gardener Kiosk, 2nd Saturday of the month, 9 am - 12 pm](#)

[Friends Pop-up Book Sale, Thursdays, 10 am-1 pm](#)



Clubs & Meetups

Sewers in Stitches: Mondays • 2:00-4:00 PM • Terrace Room
Knit & Crochet Group: Tuesdays • 5:30-7:30 PM • Makerspace
The Poetry Gathering: 2nd Monday of the month • 5:00-7:00 PM • Terrace Room
Caregiver Support Group: 2nd Wednesday of the month • 5:30-6:30 PM • Roberts Room
Cookbook Club: 2nd Wednesday of the month • 6:00-7:30 PM • Terrace Room
Tech Social: 2nd Wednesday of the month • 1-2 PM • Makerspace and via Zoom
Silent Book Club: Last Wednesday of the month • 5:30-7:00 PM • Old Main Reading Room
Chess Club (All ages): Thursdays • 5:30-7:30 PM • Old Main Reading Room
Westerly Cross Stitchers Group: 1st & 3rd Saturdays • 9 AM-12 PM • Roberts Room
Westerly Writers Group: 1st & 3rd Saturdays • 10:00 AM-12:30 PM • Makerspace

for news, events, programs and happenings please
always refer to our website for the most up-to-date info
westerlylibrary.org

holidays • closings

Monday • August 11th • Closed for Victory Day

Library Hours

Monday-Thursday: 9 AM-8 PM

Friday: 9 AM-6 PM

Saturday: 9 AM-4 PM

Sunday: Closed

Park Hours

Monday-Sunday: Dawn-9 PM



**WESTERLY LIBRARY
& WILCOX PARK**